

Analysts – Kaynat Chainwala, Riteshkumar Sahu and Saish Sawant Dessai

March 27, 2026

Non Agri Commodity prices as on 26-Mar-26					
Commodity	High	Low	Close	Chg	% Chg
SPOT PRECIOUS METALS					
Spot Gold	4544.4	4351.4	4376.1	-129.9	-2.88
Spot Silver	72.210	66.727	68.1	-3.2	-4.43
COMEX PRECIOUS METALS					
Gold (\$/toz)	4574.0	4380.4	4409.0	-176.5	-3.85
Silver (\$/toz)	72.385	66.705	67.934	-4.71	-6.48
MCX PRECIOUS METALS					
Gold (Rs/10 gram)	145500	142330	142514	-4926.0	-3.34
Silver (Rs/kg)	225441	219000	219874	-14960.0	-6.37
ENERGY					
Brent Crude oil (\$/bbl)	109.1	102.8	108.0	5.79	5.66
WTI Crude oil (\$/bbl)	95.4	89.5	94.5	4.16	4.61
NYMEX NG (\$/MMBtu)	2.986	2.878	2.928	0.02	0.55
MCX ENERGY					
Crude oil (Rs/bbl)	9068.0	8741.0	8999.0	500.0	5.88
Natural Gas (Rs/MMBtu)	283.3	274.0	281.1	4.8	1.74
MCX Electricity	4006.0	3920.0	3984.0	-20.0	-0.50
LME BASE METALS (\$/tonne)					
Copper	12282.5	12079.0	12147.0	-174.5	-1.42
Aluminium	3299.0	3212.0	3269.5	27.0	0.83
Lead	1908.0	1883.5	1891.5	-20.0	-1.05
Zinc	3118.5	3044.5	3081.5	2.0	0.06
Nickel	17450.0	17120.0	17253.0	-91.0	-0.52
MCX BASE METALS (Rs/kg)					
Copper	1128.0	1113.0	1121.2	-7.0	-0.62
Aluminium	339.5	335.6	336.2	1.3	0.39
Lead	193.5	191.8	193.1	-0.4	-0.21
Zinc	311.1	307.0	307.8	-1.6	-0.50
Nickel	1618.0	1618.0	1618.0	-5.8	-0.36
LME BASE METALS (Inventory)					
	26-03-2026	25-03-2026	Day Change	w-o-w	y-o-y
Copper	359825.0	360175.0	-350	7.27%	67.15%
Aluminium	423075.0	426750.0	-3675	-2.23%	-9.90%
Lead	282240.0	282456.0	-216	-0.54%	40.21%
Zinc	115650.0	116475.0	-825	-1.87%	-20.01%
Nickel	283100.0	283150.0	-50	-0.40%	22.30%
CURRENCIES					
Dollar Index	100.0	99.6	99.9	0.3	0.30

Source: Bloomberg

Bullion – Spot gold fell nearly 3% and silver slipped over 4.5% on Thursday, pressured by collapse of U.S.–Iran ceasefire negotiations, a firmer dollar, and rising Treasury yields. Decline extended after Iran’s proposal asserting control over the Strait of Hormuz signaled prolonged geopolitical uncertainty, while firmer oil added to inflation concerns. The dollar rose to 100 and 10-year yield climbed, despite mixed labor data, as initial jobless claims rose to 210K while continuing claims dropped to 1.82 million. Around 85 tons of gold holdings in ETFs redeemed since the war began, according to a Bloomberg calculation. However, late in the session, gold rebounded above \$4,400 after Trump delayed potential strikes on Iran. Today, gold holds near \$4,430, on mixed signals over Cease fire but upside capped by Fed expectations, while investors’ focus now shifts to UoM sentiment and speeches from Cook and Jefferson.

Crude Oil – Crude prices continue to be driven by headline risk, reacting to shifting signals around U.S.–Iran relations and the lack of a clear path toward de-escalation. WTI crude jumped 5% on Thursday to \$95/bbl, following a decline over 2% in the previous session. Brent crude also strengthened, rising above \$109, keeping the Brent–WTI spread well above \$10 well beyond its usual low single-digit range showing a stronger premium for seaborne crude. Diplomatic progress appears limited, as Iran’s foreign minister confirmed a U.S. proposal is under review but ruled out direct talks, while Trump reiterated pressure on Tehran. Today, Oil slipped to \$92 after Trump delayed a decision on potential action targeting Iran’s energy sector, but prices later recovered above \$93.5. Ongoing mixed signals suggest that any resolution may take time, sustaining near-term volatility.

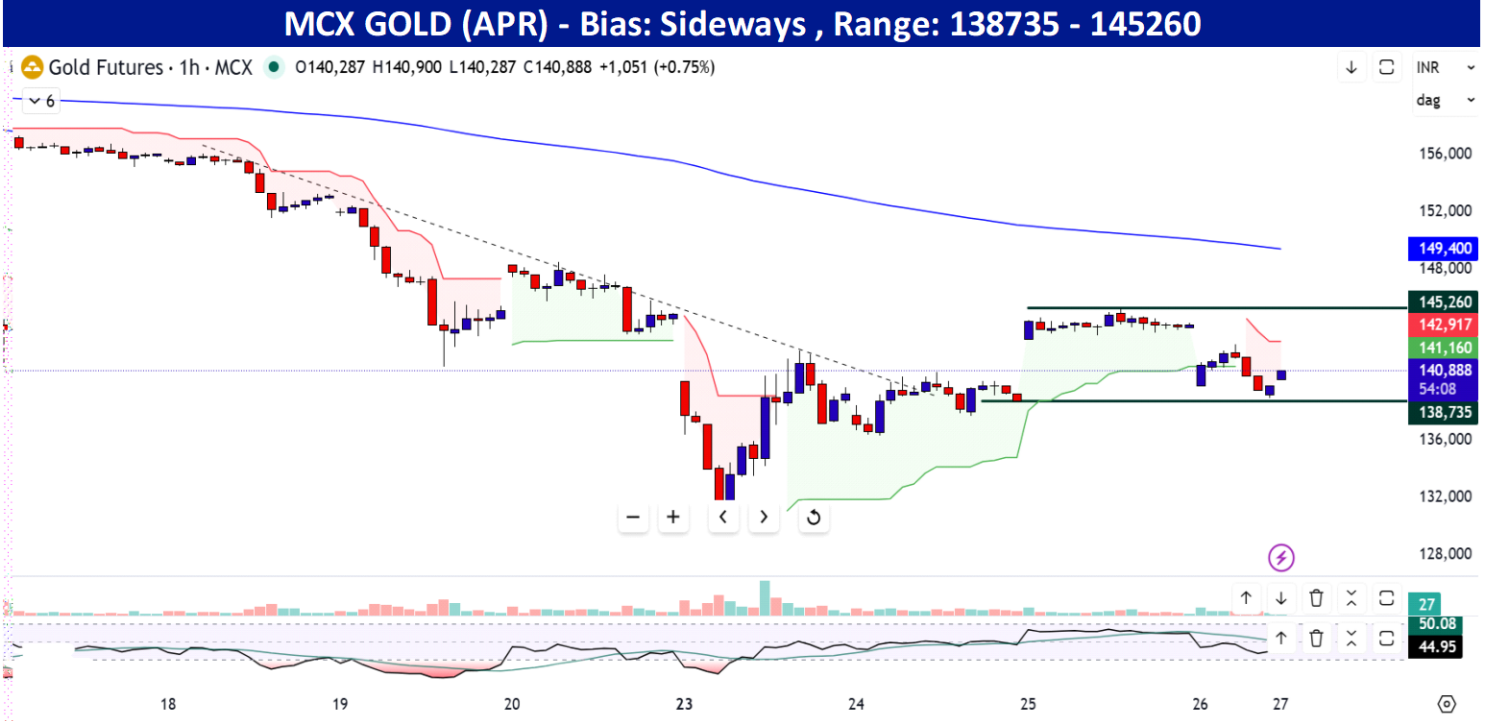
Natural Gas – NYMEX gas futures closed marginally higher at \$2.92/mmBtu, supported by a larger-than-expected inventory draw, but gains were capped by warmer weather projections.

Base metals – Base metals ended Thursday mixed, with aluminium and zinc posting modest gains, while copper declined over 1% to settle near \$12,150/ton. Sentiment remains largely driven by uncertainty around U.S.-Iran negotiations, with conflicting signals keeping markets cautious. Elevated energy prices continue to fuel inflation concerns and weigh on global industrial activity and demand. Copper remains under pressure amid macro headwinds, although recent declines have triggered early signs of demand recovery in China. In contrast, aluminium continues to find support from tightening supply conditions linked to disruptions around the Strait of Hormuz, while zinc is supported by supply issues at Boliden’s Garpenberg mine. In today's session base metals are likely to remain range-bound, with supply risks offering support but demand uncertainty and geopolitical developments capping upside.

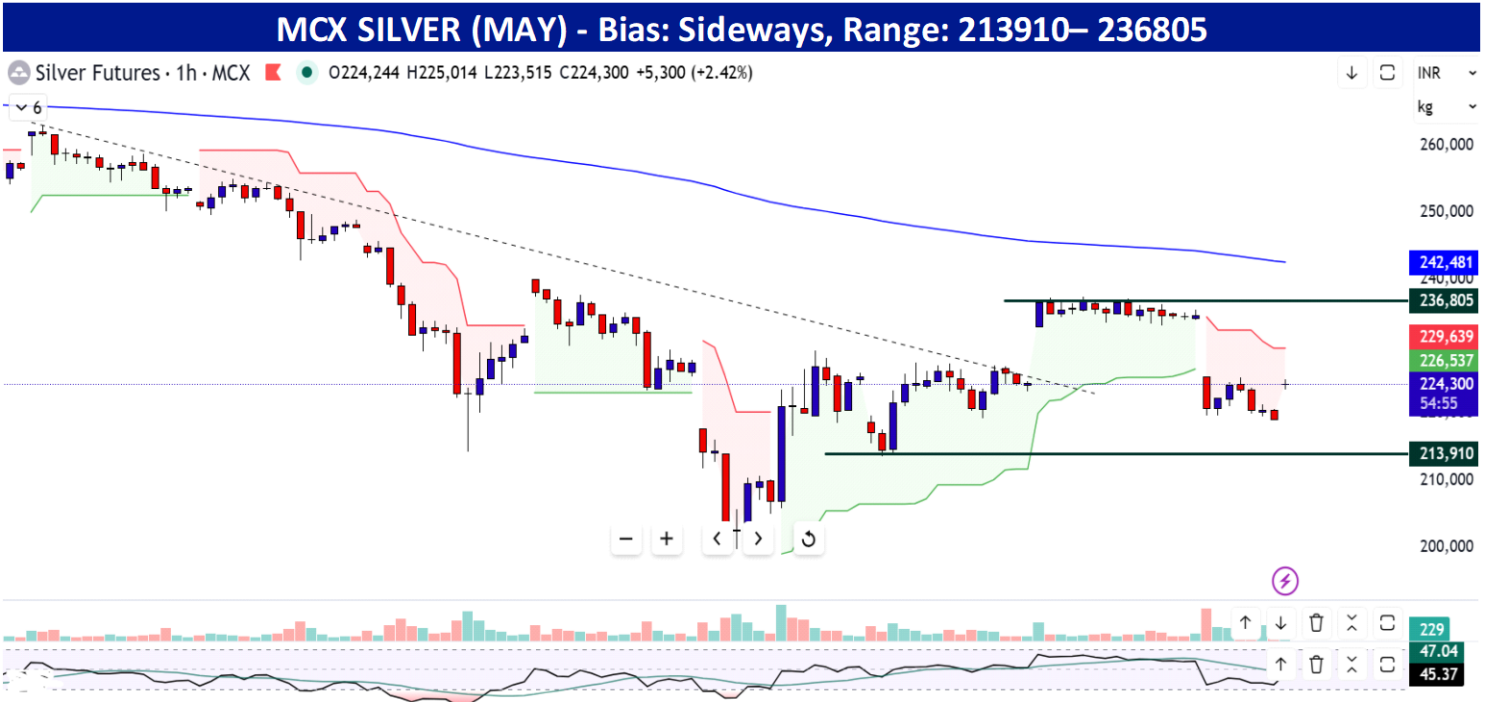
MCX SPREAD MONITOR (M2-M1)			
Commodity	Previous	Current	Trend
Gold (Rs/10gm)	3343	3021	Narrowing
Silver (Rs/kg)	5024	5096	Widening
Copper (Rs/kg)	16.8	19.1	Widening
Aluminium (Rs/kg)	1.8	2.5	Widening
Lead (Rs/kg)	2.2	1.1	Narrowing
Zinc (Rs/kg)	1.1	2.9	Widening
Nickel (Rs/Kg)	18.9	21.1	Widening
Crude (Rs/bbl)	-219	-275	Widening
NG (Rs/mmBtu)	14.9	13.7	Narrowing
Electricity (Rs/MW)	332	263	Narrowing
Gold Silver Ratio	63.3	64.3	Widening
Crude/NG Ratio	30.8	32.0	Widening

Source: Bloomberg

TECHNICAL CHARTS



Source:-Tradingview, KS Commodity Research



TECHNICAL CHARTS

MCX CRUDE OIL (APR) - Bias: Sideways to Bullish, Range: 8690– 9410

Crude Oil Futures · 1h · MCX ● O8,853 H8,877 L8,820 C8,868 -147 (-1.63%)



Source:-Tradingview, KS Commodity Research

MCX COPPER (APR) - Sideways to Bullish, Range: 1030.40 – 1165.80

Copper Futures · 1h · MCX ● O1,145.80 H1,147.90 L1,142.00 C1,147.80 +9.50 (+0.83%)



RATING SCALE FOR DAILY REPORT

BUY	We expect the commodity to deliver 1% or more returns
SELL	We expect the commodity to deliver (-1%) or more returns
SIDEWAYS	We expect the commodity to trade in the range of (+/-)1%

NOTE - The recommendations are valid for one day from the date of issue of the report, subject to mentioned stop loss, if any

FUNDAMENTAL RESEARCH TEAM

Anindya Banerjee	Head of Research
Kaynat Chainwala	AVP, Commodity Research
Riteshkumar Sahu	Agri-Complex, Bullions
Saish Sawant Dessai	Base Metals

TECHNICAL RESEARCH TEAM

Abhijit Chavan	Jimesh Chauhan	Durgesh Ugawekar	Nikesh Kumar	Gyan Singh
----------------	----------------	------------------	--------------	------------

Disclosure/Disclaimer

Kotak Securities Limited established in 1994, is a subsidiary of Kotak Mahindra Bank Limited. Kotak Securities is one of India's largest brokerage and distribution house.

Kotak Securities Limited is a corporate trading and clearing member of BSE Limited, National Stock Exchange of India Limited (NSE), Metropolitan Stock Exchange of India Limited (MSE), National Commodity and Derivatives Exchange (NCDEX) and Multi Commodity Exchange(MCX). Our businesses include stock broking, services rendered in connection with distribution of primary market issues and financial products like mutual funds and fixed deposits, depository services and Portfolio Management.

Kotak Securities Limited is also a depository participant with National Securities Depository Limited (NSDL) and Central Depository Services (India) Limited (CDSL). Kotak Securities Limited is also registered with Insurance Regulatory and Development Authority as Corporate Agent for Kotak Mahindra Old Mutual Life Insurance Limited and is also a Mutual Fund Advisor registered with Association of Mutual Funds in India (AMFI). We are registered as a Research Analyst under SEBI (Research Analyst) Regulations, 2014.

We hereby declare that our activities were neither suspended nor we have defaulted with any stock exchange authority with whom we are registered in last five years. However, SEBI, Exchanges and Depositories have conducted the routine inspection and based on their observations have issued advise/warning/deficiency letters or levied minor penalty on KSL for certain operational deviations. We have not been debarred from doing business by any Stock Exchange / SEBI or any other authorities; nor has our certificate of registration been cancelled by SEBI at any point of time. We offer our research services to clients as well as our prospects.

This document is not for public distribution and has been furnished to you solely for your information and must not be reproduced or redistributed to any other person. Persons into whose possession this document may come are required to observe these restrictions. This material is for the personal information of the authorized recipient, and we are not soliciting any action based upon it. This report is not to be construed as an offer to sell or the solicitation of an offer to buy any security in any jurisdiction where such an offer or solicitation would be illegal. It is for the general information of present and prospective clients of Kotak Securities Ltd.

We have reviewed the report, and in so far as it includes current or historical information, it is believed to be reliable though its accuracy or completeness cannot be guaranteed. Neither Kotak Securities Limited, nor any person connected with it, accepts any liability arising from the use of this document. The recipients of this material should rely on their own investigations and take their own professional advice. Price and value of the investments referred to in this material may rise or fall. Past performance is not a guide for future performance. Certain transactions -including those involving futures, options and other derivatives involve substantial risk and are not suitable for every investor. Reports based on technical analysis centers on studying charts of price movement and trading volume, as opposed to focusing on fundamentals. The views provided herein are general in nature and does not consider risk appetite or investment objective of particular investor; readers are requested to take independent professional advice before investing. The Report does not constitute a personal recommendation or take into account the particular investment objectives, financial situations, or needs of individual clients. Kotak Securities Limited does not provide any promise or assurance of favorable view for a particular commodity in any manner. The investor is requested to take into consideration all the risk factors including their financial condition, suitability to risk return profile and take professional advice before investing.

Opinions expressed are our current opinions as of the date appearing on this material only. While we endeavor to update on a reasonable basis the information discussed in this material, there may be regulatory, compliance or other reasons that prevent us from doing so. Prospective investors and others are cautioned that any forward-looking statements are not predictions and may be subject to change without notice. Kotak Securities Limited is not engaged in proprietary trade in commodities and the views mentioned in the report are not in any manner influenced by self-interest of Kotak Securities Limited or the individual Research Analyst.

We and our affiliates/associates, officers, directors, and employees, Research Analyst (including relatives) worldwide may: (a) from time to time, have long or short positions in, and buy or sell the securities thereof mentioned herein or (b) be engaged in any other transaction involving such securities and earn brokerage or other compensation or act as a market maker or act as advisor or have other potential/material conflict of interest with respect to any recommendation and related information and opinions at the time of publication of Research Report or at the time of public appearance. The views provided herein are general in nature and does not consider risk appetite or investment objective of particular investor; readers are requested to take independent professional advice before investing. This should not be construed as invitation or solicitation to do business with KSL. Kotak Securities Limited is also a Portfolio Manager. Portfolio Management Team (PMS) takes its independent investment decisions. The analyst for this report certifies that all of the views expressed in this report accurately reflect his or her personal views about the securities if any and its or their securities, and no part of his or her compensation was, is or will be, directly or indirectly related to specific recommendations or views expressed in this report.

No part of this material may be duplicated in any form and/or redistributed without Kotak Securities' prior written consent. Details of Associates are available on website i.e. www.kotak.com

1. "Note that the research analysts contributing to the research report may not be registered/qualified as research analysts with FINRA; and
 2. Such research analysts may not be associated persons of Kotak Mahindra Inc. and therefore, may not be subject to NASD Rule 2711 restrictions on communications with a subject company, public appearances and trading securities held by a research analyst account
- Any U.S. recipients of the research who wish to effect transactions in any security covered by the report should do so with or through Kotak Mahindra Inc. (Member FINRA/SIPC) and (ii) any transactions in the securities covered by the research by U.S. recipients must be effected only through Kotak Mahindra Inc. (Member FINRA/SIPC) at 369 Lexington Avenue 28th Floor NY 10017 USA (Tel: +1 212-600-8850).

Kotak Securities Limited and its non US affiliates may, to the extent permissible under applicable laws, have acted on or used this research to the extent that it relates to non US issuers, prior to or immediately following its publication. This material should not be construed as an offer to sell Kotak Securities Limited and its non US affiliates may, to the extent permissible under applicable laws, have acted on or used this research to the extent that it relates to non US issuers, prior to or immediately following its publication. This material should not be construed as an offer to sell or the solicitation of an offer to buy any security in any jurisdiction where such an offer or solicitation would be illegal. This research report and its respective contents do not constitute an offer or invitation to purchase or subscribe for any securities or solicitation of any investments or investment services. Accordingly, any brokerage and investment services including the products and services described are not available to or intended for Canadian persons or US persons."

Research Analyst has served as an officer, director or employee of Subject Company: NA

We or our associates may have received compensation from the subject company, if any in the past 12 months: NA

We or our associates may have managed or co-managed public offering of securities for the subject company (ies) in the past 12 months: NA

We or our associates may have received compensation for investment banking or merchant banking or brokerage services from the subject company, if any in the past 12 months: NA

We or our associates may have received any compensation for products or services other than investment banking or merchant banking or brokerage services from the subject company, if any in the past 12 months: NA.

We or our associates may have received any compensation or other benefits from the Subject Company if any or third party in connection with the research report: NA.

Our associates may have financial interest in the subject company(ies) if any: NA

Research Analyst or his/her relative's financial interest in the subject company (ies)/securities: No

Kotak Securities Limited has financial interest in the subject company (ies) at the end of the week immediately preceding the date of publication of Research Report: No

'However, Kotak Securities Prop/Arbitrage team could have exposure/financial interest to the subject company/companies during the ongoing month.'

'Nature of financial interest is holding of equity shares and/or derivatives of the subject company.'

Our associates may have actual/beneficial ownership of 1% or more securities at the end of the month immediately preceding the date of publication of Research Report.

Research Analyst or his/her relatives has actual/beneficial ownership of 1% or more securities at the end of the month immediately preceding the date of publication of Research Report: No

Kotak Securities Limited has actual/beneficial ownership of 1% or more securities at the end of the month immediately preceding the date of publication of Research Report: No

Subject Company, if any may have been client during twelve months preceding the date of distribution of the research report.: NA

Daily price movement of commodities is available on the following websites:

<https://www.mcxindia.com/market-data/market-watch>

<https://ncdex.com/MarketData/LiveFuturesQuotes.aspx>

https://www.nseindia.com/live_market/dynaContent/live_watch/commodity_der_stock_watch.htm

<https://www.bseindia.com/markets/Commodity/commodity.html>

Our research should not be considered as an advertisement or advice, professional or otherwise. The investor is requested to take into consideration all the risk factors including their financial condition, suitability to risk return profile and the like and take professional advice before investing.

Investments in securities market are subject to market risks, read all the related documents carefully before investing. This information is purely backed by KSL research analyst based on research recommendation. Kotak Securities Ltd has registration granted by SEBI, Enlistment as RA and certification from NISM in no way guarantee performance of the intermediary or provide any assurance of returns to investors.

“General Terms and Conditions for Usage of AI/ML in Research Services These Terms and Conditions (“T&C’s”) govern the use of research services provided by Kotak Securities Limited (“KSL”), where Artificial Intelligence (AI) and Machine Learning (ML) technologies are used as part of the research presentation and related services. By accessing or using such services, you acknowledge and agree to the following: **1. Purpose of AI/ML Usage** KSL employs AI/ML based tools for limited purposes such as • Audio and video generation using AI-created voices, avatars, and formats; • Enhancing accessibility and presentation of research insights; • Facilitating efficiency in dissemination of market related content and research content. The AI/ML tools are used only as a medium of presentation and/or dissemination and do not alter the substance of research prepared by KSL. **2. Extent of Usage** The specific scope and manner of AI/ML usage in research services is set out in the AI Disclaimer published along with the relevant research content and is also published on the website under the disclaimers section. Users are advised to carefully review such disclaimers for detailed information on the extent and limitations of AI/ML usage as may be updated by KSL from time to time in the disclaimer section <https://www.kotaksecurities.com/disclaimer/>. **3. Ownership of Research Content** The underlying research market views, data, analysis, and opinions remain solely those of KSL. AI/ML is not used to create independent investment recommendations. **4. Accuracy and Limitations** While KSL takes reasonable care to ensure the accuracy of its research content: • AI/ML outputs may not always reflect complete, precise, or contextually appropriate information; • KSL makes no warranties, express or implied, as to the reliability, accuracy, or fitness of AI/ML generated presentations. **5. No Confidential Information Input** KSL does not upload, disclose, or process any client specific, confidential, or proprietary information through AI/ML platforms. All content generated through AI/ML is limited to publicly available information, market data, and internally developed research compliant with SEBI regulations. **6. Investor Responsibility** Clients and viewers shall not rely solely on AI generated content for making any investment or trading decisions. The AI/ML generated presentations, output and dissemination are only for informational and illustrative purposes. Investors are further advised to consult their financial advisor before making any investment or trading decisions. **7. No Liability** KSL shall not be responsible for or liable for any losses, damages, or claims arising directly or indirectly from reliance on AI/ML generated presentations or any output produced by the AI/ML. KSL shall not be liable for any loss, damage, or harm, whether direct, indirect, incidental, special, consequential, or punitive, arising from: • reliance on any AI-generated information; • business, financial, or investment decisions made based on such outputs; or • any inaccuracies, errors, or omissions in the responses. **8. Amendments** KSL reserves the right to modify, update, or withdraw these T&C’s or its usage of AI/ML technologies at its sole discretion, subject to compliance with applicable laws and regulations”

Kotak Securities Ltd. Registered Office: 27 BKC, C 27, G Block, Bandra Kurla Complex, Bandra (E), Mumbai 400051. CIN: U99999MH1994PLC134051, Telephone No.: +22 43360000, Fax No.: +22 67132430. Website: www.kotak.com / www.kotakneo.com. Correspondence Address: Infinity IT Park, Bldg. No 21, Opp. Film City Road, A K Vaidya Marg, Malad (East), Mumbai 400097. Telephone No: 42856825. SEBI Registration No: INZ000200137(Member of NSE, BSE, MSE, MCX & NCDEX), AMFI ARN 0164, PMS INP000000258 and Research Analyst INH000000586. NSDL/CDSL: : IN-DP-629-2021. Compliance Officer Details: Mr. Hiren Thakkar Call: 022 - 4285 8484, or Email: ks.compliance@kotak.com. For T&C and disclaimers, Visit <https://bit.ly/longdisc>,

In case you require any clarification or have any query/concern, kindly write to us at Service.securities@kotak.com. For grievances write to KS.escalation@kotak.com and find Grievances Escalation matrix in the link below.

<https://www.kotakneo.com/disclaimer/commodities/>