

**Sahaj Agrawal**  
sahaj.agrawal@kotak.com  
+91 79 6607 2231

**Prashanth Lalu**  
prashanth.lalu@kotak.com  
+91 22 6218 5497

**Prasenjit Biswas, CMT, CFTE**  
prasenjit.biswas@kotak.com  
+91 33 6615 6240

**Karan Kulkarni**  
karan.kulkarni@kotak.com  
+91 20 6608 3292

## NIFTY DERIVATIVE SNAPSHOT FOR CURRENT SERIES

	NIFTY Future	OI (Shares)	VOLUME	BASIS	PCR OI	TREND LEVEL
CURRENT	19,830	11,028,550	6,650,650	64.7	1.22	<b>19450</b>
PREVIOUS	19,723	11,400,600	6,107,650	48.3	1.19	
% CHANGE	0.54%	-3.26%	8.89%	-	-	

## OUTLOOK

### Nifty

- After the flat start, Nifty witnessed a positive momentum followed by a sharp up move after crossing 19730 which pushed the index above 19850 however profit booking in the final hour trimmed gains partially. Finally, Nifty closed positive with a gain of 0.46 percent.
- Highest call side open interest is at 19900 and highest put side open interest is at 19700
- Almost equal writing witnessed on both the call side and the put side indicates a range bound activity
- Vwap based trading range for tomorrow is between 19640-19905
- The Max Pain is seen at 19800 spot with the CE/PE Combined Residual Premium/Pain Value of 143.12 Crores.

### NIFTY LEVELS

18880    19030    19250    19450    19625    19830

### Sectors/Stocks

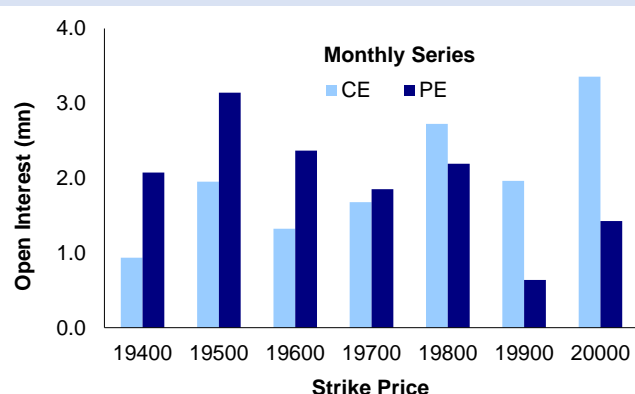
- Nifty Midcap 100 index outperformed today comparing to the Nifty and closed positive with a gain of 0.78 percent
- Top performing sectors were IT and Healthcare while FMCG and PSU Banks underperformed

Market wide open interest is 1,439,064 Cr.

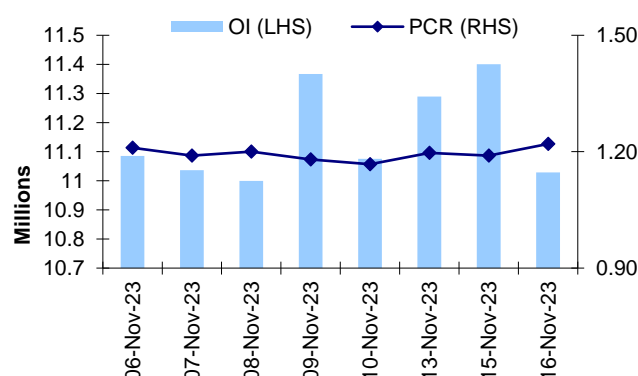
### Recommendations

- DERIVATIVES SHORT TERM : BUY NSEFUT DRREDDY NOV @ 5570 SL 5400 TGT 5800
- DERIVATIVES SHORT TERM : BUY NSEFUT ZYDUSLIFE NOV @ 632.95 SL 615 TGT 660

## NIFTY OPTIONS OI



## NIFTY PCR OI



## OPTION STATISTICS

## Nifty OPTION CHAIN ANALYSIS

Nifty CMP: 19,765		STRIKE (23-NOV-2023 EXPIRY)	Time: 16/11/2023; 3:30PM	
CALL OI	Change (CALL OI)		Change (PUT OI)	PUT OI
35,688	27,781	20300	270	274
14,638	9,550	20250	26	26
69,425	57,370 (83%)	20200	912	1,094
28,986	25,313	20150	87	87
67,734	53,389 (79%)	20100	1,118	1,244
40,867	35,509 (87%)	20050	513	513
▼93,746	60,683 (65%)	20000	5,419	6,569
31,355	22,530	19950	2,721	2,949
▼1,05,386	78,246 (74%)	19900	16,540	17,650
31,921	12,665	19850	18,160	18,728
▼75,768	33,432 (44%)	19800	65,775 (92%)	71,743
20,096	5,272	19750	23,764	27,370
44,591	-937	19700	60,932 (70%)	87,559
6,105	-7,170	19650	19,415	31,135
19,729	-12,624	19600	35,779 (45%)	80,223
2,683	-1,974	19550	14,750	27,121
12,151	-3,417	19500	24,077	59,383
1,400	-1,007	19450	10,977	26,877
2,904	20	19400	31,027	56,374
625	42	19350	6,172	16,149
1,927	70	19300	33,774	51,346
10,05,562	6,62,878	TOTAL OI	6,83,701	10,12,947

Source : NSE India Option Chain

## FUTURE STATISTICS

## OI INCREASE

SYMBOL	OI (%)	OI (SHARES)	PRICE CHG (%)
INDIACEM	22.8%	28,373,600	2.9%
MANAPPURAM	18.4%	78,882,000	6.6%
COFORGE	15.2%	1,197,000	6.7%
ONGC	11.2%	58,431,450	1.2%
MGL	8.5%	2,061,600	1.1%
LALPATHLAB	7.4%	1,021,200	1.8%
HCLTECH	7.1%	13,154,400	2.7%
BALKRISIND	6.6%	1,870,500	0.7%
CUB	6.2%	35,130,000	2.4%
ICICIPRULI	5.8%	9,492,000	0.9%
INDIAMART	5.5%	938,400	0.7%

## OI DECREASE

SYMBOL	OI (%)	OI (SHARES)	PRICE CHG (%)
SIEMENS	-8.1%	2,497,925	0.8%
MPHASIS	-6.5%	2,332,825	4.3%
ESCORTS	-6.4%	1,943,425	1.5%
OBEROIRLTY	-6.3%	7,805,000	2.3%
MCX	-5.5%	4,007,600	2.1%
LUPIN	-5.4%	9,354,250	2.0%
RAMCOCEM	-5.4%	3,690,700	0.8%
INDUSINDBK	-5.1%	25,336,000	0.3%
COROMANDEL	-5.1%	1,477,700	0.4%
IBULHSGFIN	-4.9%	57,191,400	3.4%
TCS	-4.9%	12,770,275	2.7%

## OPTION STATISTICS

## SIGNIFICANT CALL OPEN INTEREST

SYMBOL	STRK PRICE	OPTION TYPE	CLOSE (RS)	FUT CLOSE	OI (SHARES)
NIL					

## SIGNIFICANT PUT OPEN INTEREST

SYMBOL	STRK PRICE	OPTION TYPE	CLOSE (RS)	FUT CLOSE	OI (SHARES)
NIL					

## SIGNIFICANT CALL OPEN INTEREST ADDITION

SYMBOL	STRK PRICE	OPTION TYPE	OPEN INT	OI CHG (%)	CLOSE (Rs)
MANAPPURAM	165	CE	2,088,000	11500%	3.4
INFY	1,570	CE	160,800	9950%	1.1
NTPC	267	CE	189,000	6200%	0.9
CHAMBLFERT	317	CE	218,500	5650%	5.1
COALINDIA	382	CE	287,700	4467%	0.9
MANAPPURAM	170	CE	2,418,000	4378%	2.0
BEL	157	CE	114,000	1900%	0.4
NTPC	272	CE	159,000	1667%	0.6
COFORGE	6,000	CE	145,050	1225%	43.7
BHEL	157	CE	168,000	700%	0.6

## SIGNIFICANT PUT OPEN INTEREST ADDITION

SYMBOL	STRK PRICE	OPTION TYPE	OPEN INT	OI CHG (%)	CLOSE (Rs)
COFORGE	5,500	PE	118,500	7800%	64.5
HCLTECH	1,310	PE	159,600	2750%	14.4
HCLTECH	1,320	PE	149,800	2575%	19.6
MANAPPURAM	150	PE	2,928,000	2022%	1.6
CUB	147	PE	315,000	2000%	4.0
CHAMBLFERT	315	PE	233,700	1950%	11.5
HEROMOTOCO	3,260	PE	102,600	1610%	41.3
HINDPETRO	325	PE	504,900	1458%	9.9
MANAPPURAM	147	PE	330,000	1275%	1.2
TATAMOTORS	685	PE	544,350	1132%	15.3

## CALL OPTION VOLUMES

SYMBOL	STRK PRICE	OPTION TYPE	CONTRACTS	CLOSE (Rs)
TCS	3,500	CE	68,009	44.1
BAJFINANCE	7,500	CE	42,033	82.5
TCS	3,600	CE	41,232	15.4
BAJFINANCE	7,300	CE	38,771	179.5
RELIANCE	2,400	CE	35,495	11.7
MARUTI	10,500	CE	32,193	135.2
BAJFINANCE	7,200	CE	32,166	249.4
BAJFINANCE	7,400	CE	31,197	123.2
RELIANCE	2,360	CE	30,053	25.8
TATAMOTORS	680	CE	27,746	14.3

## PUT OPTION VOLUMES

SYMBOL	STRK PRICE	OPTION TYPE	CONTRACTS	CLOSE (Rs)
BAJFINANCE	7,000	PE	64,018	36.7
BAJFINANCE	7,100	PE	34,926	49.2
BAJFINANCE	7,200	PE	34,171	68.0
BAJFINANCE	6,500	PE	28,124	9.7
BAJFINANCE	6,800	PE	26,174	20.2
BAJFINANCE	7,300	PE	26,111	96.3
BAJFINANCE	6,900	PE	21,369	27.0
TCS	3,500	PE	18,083	39.1
BAJFINANCE	6,700	PE	17,715	14.7
TCS	3,400	PE	16,879	10.2

## RATING SCALE (PRIVATE CLIENT GROUP)

- BUY** – Stock/Index looks strong from the expiry/near term perspective and is expected to gain on the basis of technical and/or derivative parameters. Time frame is minimum of current expiry and in certain cases extend to the next series depending on the stock behaviour. Strict stop loss needs to be adhered to for every buy/long recommendation given.
- SELL** – Stock/Index looks weak from the expiry/near term perspective and is expected to gain on the basis of technical and/or derivative parameters. Time frame is minimum of current expiry and in certain cases extend to the next series depending on the stock behaviour. Strict stop loss needs to be adhered to for every sell/short recommendation given.

## FUNDAMENTAL RESEARCH TEAM (PRIVATE CLIENT GROUP)

<b>Shrikant Chouhan</b> Head of Research shrikant.chouhan@kotak.com +91 22 6218 5408	<b>Arun Agarwal</b> Auto & Auto Ancillary, Building Material, Cement, Consumer Durable arun.agarwal@kotak.com +91 22 6218 6443	<b>Amit Agarwal, CFA</b> Transportation, Paints, FMCG agarwal.amit@kotak.com +91 22 6218 6439
<b>Purvi Shah</b> Pharmaceuticals purvi.shah@kotak.com +91 22 6218 6432	<b>Rini Mehta</b> Research Associate rini.mehta@kotak.com +91 22 6218 6433	<b>K. Kathirvelu</b> Support Executive k.kathirvelu@kotak.com +91 22 6218 6427
<b>Sumit Pokharna</b> Oil and Gas, Information Tech sumit.pokharna@kotak.com +91 22 6218 6438	<b>Pankaj Kumar</b> Construction, Capital Goods & Midcaps pankajr.kumar@kotak.com +91 22 6218 5498	<b>Amarjeet Maurya</b> Internet Software & Services amarjeet.maurya@kotak.com +91 22 6218 6427

## TECHNICAL RESEARCH TEAM (PRIVATE CLIENT GROUP)

<b>Shrikant Chouhan</b> shrikant.chouhan@kotak.com +91 22 6218 5408	<b>Amol Athawale</b> amol.athawale@kotak.com +91 20 6620 3350	<b>Sayed Haider</b> Research Associate sayed.haider@kotak.com +91 22 62185498
---	---	--

## DERIVATIVES RESEARCH TEAM (PRIVATE CLIENT GROUP)

<b>Sahaj Agrawal</b> sahaj.agrawal@kotak.com +91 79 6604 1701	<b>Prashanth Lalu</b> prashanth.lalu@kotak.com +91 22 6218 5497	<b>Prasenjit Biswas, CMT, CFTE</b> prasenjit.biswas@kotak.com +91 33 6615 6240	<b>Karan Kulkarni</b> karan.kulkarni@kotak.com +91 20 6608 3292
---	---	--	---

## Disclosure/Disclaimer

Kotak Securities Limited established in 1994, is a subsidiary of Kotak Mahindra Bank Limited. Kotak Securities is one of India's largest brokerage and distribution house.

Kotak Securities Limited is a corporate trading and clearing member of BSE Limited (BSE), National Stock Exchange of India Limited (NSE), Metropolitan Stock Exchange of India Limited (MSE), National Commodity and Derivatives Exchange (NCDEX) and Multi Commodity Exchange (MCX). Our businesses include stock broking, services rendered in connection with distribution of primary market issues and financial products like mutual funds and fixed deposits, depository services and Portfolio Management.

Kotak Securities Limited is also a depository participant with National Securities Depository Limited (NSDL) and Central Depository Services (India) Limited (CDSL). Kotak Securities Limited is also registered with Insurance Regulatory and Development Authority as Corporate Agent for Kotak Mahindra Life Insurance Company Limited and Kotak Mahindra General Insurance Company Limited and is also a Mutual Fund Advisor registered with Association of Mutual Funds in India (AMFI). We are registered as a Research Analyst under SEBI (Research Analyst) Regulations, 2014.

We hereby declare that our activities were neither suspended nor we have defaulted with any stock exchange authority with whom we are registered in last five years. However SEBI, Exchanges, Clearing Corporations and Depositories etc have conducted the routine inspection and based on their observations have issued advise/warning/show cause notices/deficiency letters/ or levied penalty or imposed charges for certain deviations observed in inspections or in normal course of business, as a Stock Broker / Depository Participant/Portfolio Manager. We have not been debarred from doing business by any Stock Exchange / SEBI or any other authorities; nor has our certificate of registration been cancelled by SEBI at any point of time.

We offer our research services to clients as well as our prospects.

This document is not for public distribution and has been furnished to you solely for your information and must not be reproduced or redistributed to any other person. Persons into whose possession this document may come are required to observe these restrictions.

This material is for the personal information of the authorized recipient, and we are not soliciting any action based upon it. This report is not to be construed as an offer to sell or the solicitation of an offer to buy any security in any jurisdiction where such an offer or solicitation would be illegal. It is for the general information of clients of Kotak Securities Ltd. It does not constitute a personal recommendation or take into account the particular investment objectives, financial situations, or needs of individual clients.

We have reviewed the report, and in so far as it includes current or historical information, it is believed to be reliable though its accuracy or completeness cannot be guaranteed. Neither Kotak Securities Limited, nor any person connected with it, accepts any liability arising from the use of this document. The recipients of this material should rely on their own investigations and take their own professional advice. Price and value of the investments referred to in this material may go up or down. Past performance is not a guide for future performance. Certain transactions - including those involving futures, options and other derivatives as well as non-investment grade securities - involve substantial risk and are not suitable for all investors. Reports based on technical analysis centers on studying charts of a stock's price movement and trading volume, as opposed to focusing on a company's fundamentals and as such, may not match with a report on a company's fundamentals.

Opinions expressed are our current opinions as of the date appearing on this material only. While we endeavor to update on a reasonable basis the information discussed in this material, there may be regulatory, compliance or other reasons that prevent us from doing so. Prospective investors and others are cautioned that any forward-looking statements are not predictions and may be subject to change without notice. Our proprietary trading and investment businesses may make investment decisions that are inconsistent with the recommendations expressed herein.

Kotak Securities Limited has two independent equity research groups: Institutional Equities and Private Client Group. This report has been prepared by the Private Client Group.

We and our affiliates/associates, officers, directors, and employees, Research Analyst(including relatives) worldwide may: (a) from time to time, have long or short positions in, and buy or sell the securities thereof, of company (ies) mentioned herein or (b) be engaged in any other transaction involving such securities and earn brokerage or other compensation or act as a market maker in the financial instruments of the subject company/company (ies) discussed herein or act as advisor or lender / borrower to such company (ies) or have other potential/material conflict of interest with respect to any recommendation and related information and opinions at the time of publication of Research Report or at the time of public appearance. Kotak Securities Limited (KSL) may have proprietary long/short position in the above mentioned scrip(s) and therefore may be considered as interested. The views provided herein are general in nature and does not consider risk appetite or investment objective of particular investor; readers are requested to take independent professional advice before investing. This should not be construed as invitation or solicitation to do business with KSL. Kotak Securities Limited is also a Portfolio Manager. Portfolio Management Team (PMS) takes its investment decisions independent of the PCG research and accordingly PMS may have positions contrary to the PCG research recommendation. Kotak Securities Limited does not provide any promise or assurance of favourable view for a particular industry or sector or business group in any manner. The investor is requested to take into consideration all the risk factors including their financial condition, suitability to risk return profile and take professional advice before investing.

The analyst for this report certifies that all of the views expressed in this report accurately reflect his or her personal views about the subject company or companies and its or their securities, and no part of his or her compensation was, is or will be, directly or indirectly related to specific recommendations or views expressed in this report.

No part of this material may be duplicated in any form and/or redistributed without Kotak Securities' prior written consent.

Details of Associates are available on [www.kotak.com](http://www.kotak.com)

1. "Note that the research analysts contributing to the research report may not be registered/qualified as research analysts with FINRA; and
2. Such research analysts may not be associated persons of Kotak Mahindra Inc and therefore, may not be subject to NASD Rule 2711 restrictions on communications with a subject company, public appearances and trading securities held by a research analyst account

Any U.S. recipients of the research who wish to effect transactions in any security covered by the report should do so with or through Kotak Mahindra Inc. (Member FINRA/SIPC) and (ii) any transactions in the securities covered by the research by U.S. recipients must be effected only through Kotak Mahindra Inc. (Member FINRA/SIPC) at 369 Lexington Avenue 28th Floor NY NY 10017 USA (Tel:+1 212-600-8850).

Kotak Securities Limited and its non US affiliates may, to the extent permissible under applicable laws, have acted on or used this research to the extent that it relates to non US issuers, prior to or immediately following its publication. This material should not be construed as an offer to sell or the solicitation of an offer to buy any security in any jurisdiction where such an offer or solicitation would be illegal. This research report and its respective contents do not constitute an offer or invitation to purchase or subscribe for any securities or solicitation of any investments or investment services. Accordingly, any brokerage and investment services including the products and services described are not available to or intended for Canadian persons or US persons."

Research Analyst has served as an officer, director or employee of subject company(ies): No

We or our associates may have received compensation from the subject company(ies) in the past 12 months.

We or our associates have managed or co-managed public offering of securities for the subject company(ies) in the past 12 months: No

We or our associates may have received compensation for investment banking or merchant banking or brokerage services from the subject company(ies) in the past 12 months. We or our associates may have received any compensation for products or services other than investment banking or merchant banking or brokerage services from the subject company(ies) in the past 12 months. We or our associates may have received compensation or other benefits from the subject company(ies) or third party in connection with the research report. Our associates may have financial interest in the subject company(ies).

Research Analyst or his/her relative's financial interest in the subject company(ies): No

Kotak Securities Limited has financial interest in the subject company(ies) at the end of the week immediately preceding the date of publication of Research Report: No

"However, Kotak Securities Prop/Arbitrage team could have exposure/financial interest to the subject company/companies during the ongoing month."

"Nature of financial interest is holding of equity shares and/or derivatives of the subject company."

Our associates may have actual/beneficial ownership of 1% or more securities of the subject company(ies) at the end of the month immediately preceding the date of publication of Research Report.

Research Analyst or his/her relatives has actual/beneficial ownership of 1% or more securities of the subject company(ies) at the end of the month immediately preceding the date of publication of Research Report: No.

Kotak Securities Limited has actual/beneficial ownership of 1% or more securities of the subject company(ies) at the end of the month immediately preceding the date of publication of Research Report: No

By referring to any particular sector, Kotak Securities Limited does not provide any promise or assurance of favourable view for a particular industry or sector or business group in any manner. The investor is requested to take into consideration all the risk factors including their financial condition, suitability to risk return profile and take professional advice before investing. Such representations are not indicative of future results.

Subject company(ies) may have been client during twelve months preceding the date of distribution of the research report.

"A graph of daily closing prices of securities is available at <https://www.nseindia.com/ChartApp/install/charts/mainpage.jsp> and <http://economictimes.indiatimes.com/markets/stocks/stock-quotes>. (Choose a company from the list on the browser and select the "three years" icon in the price chart)."

Our research should not be considered as an advertisement or advice, professional or otherwise. The investor is requested to take into consideration all the risk factors including their financial condition, suitability to risk return profile and the like and take professional advice before investing.

Investments in securities market are subject to market risks. Read all the related documents carefully before investing.

Registration granted by SEBI and certification from NISM in no way guarantee performance of the intermediary or provide any assurance of returns to investors.

Derivatives are a sophisticated investment device. The investor is requested to take into consideration all the risk factors before actually trading in derivative contracts. Compliance Officer Details: Mr. Sandeep Gupta. Call: 022 - 4285 8484, or Email: [ks.compliance@kotak.com](mailto:ks.compliance@kotak.com).

Kotak Securities Limited. Registered Office: 27 BKC, C 27, G Block, Bandra Kurla Complex, Bandra (E), Mumbai 400051. CIN: U99999MH1994PLC134051, Telephone No.: +22 43360000, Fax No.: +22 67132430. Website: [www.kotak.com](http://www.kotak.com) / [www.kotaksecurities.com](http://www.kotaksecurities.com). Correspondence Address: Infinity IT Park, Bldg. No 21, Opp. Film City Road, A K Vaidya Marg, Malad (East), Mumbai 400097. Telephone No: 42856825. SEBI Registration No: INZ000200137 (Member of NSE, BSE, MSE, MCX & NCDEX), AMFI ARN 0164, PMS INP000000258 and Research Analyst INH000000586. NSDL/CDSL: IN-DP-629-2021. Compliance Officer Details: Mr. Sandeep Gupta. Call: 022 - 4285 8484, or Email: [ks.compliance@kotak.com](mailto:ks.compliance@kotak.com)

In case you require any clarification or have any query/concern, kindly write to us at [Service.securities@kotak.com](mailto:Service.securities@kotak.com). For grievances write to [KS.escalation@kotak.com](mailto:KS.escalation@kotak.com) and follow below Grievances Escalation matrix.

Details of	Contact Person	Address	Contact No.	Email Id	Working Hours
Customer care/ Complaints	Mr. Ritesh Shah	Kotak Towers, 8th Floor, Building No.21, Infinity Park, Off Western Express Highway, Malad (East), Mumbai, Maharashtra - 400097	18002099393	<a href="mailto:ks.escalation@kotak.com">ks.escalation@kotak.com</a>	9 a.m. to 6 p.m. All trading days
Head of Customer care	Mr. Tabrez Anwar	Kotak Towers, 8th Floor, Building No.21, Infinity Park, Off Western Express Highway, Malad (East), Mumbai, Maharashtra - 400097	022-42858208	<a href="mailto:ks.servicehead@kotak.com">ks.servicehead@kotak.com</a>	9 a.m. to 6 p.m. All trading days
Compliance Officer	Mr. Sandeep Gupta	Kotak Towers, 8th Floor, Building No.21, Infinity Park, Off Western Express Highway, Malad (East), Mumbai, Maharashtra - 400097	022-42858484	<a href="mailto:ks.compliance@kotak.com">ks.compliance@kotak.com</a>	9 a.m. to 6 p.m. All trading days
CEO	Mr. Jaideep Hansraj	Kotak Towers, 8th Floor, Building No.21, Infinity Park, Off Western Express Highway, Malad (East), Mumbai, Maharashtra - 400097	022-42858301	<a href="mailto:ceo.ks@kotak.com">ceo.ks@kotak.com</a>	9 a.m. to 6 p.m. All trading days

In absence of response/complaint not addressed to your satisfaction, you may lodge a complaint with SEBI at <https://scores.gov.in/scores/Welcom.html> or Exchange at <https://investorhelpline.nseindia.com/NICEPLUS/>, <https://bsecl.bseindia.com/ecomplaint/fmlInvestorHome.aspx>, Investor Service Centre | National Commodity & Derivatives Exchange Limited ([ncdex.com](http://ncdex.com)), <https://igrs.mcxindia.com/>. Please quote your Service Ticket/Complaint Ref No. while raising your complaint at SEBI SCORES/Exchange portal or Depository at <https://www.epass.nsdl.com/complaints/websitecomplaints.aspx> and <https://www.cdslindia.com/Footer/grievances>.