

Sahaj Agrawal
sahaj.agrawal@kotak.com
+91 79 6607 2231

Prashanth Lalu
prashanth.lalu@kotak.com
+91 22 6218 5497

Prasenjit Biswas, CMT, CFTE
prasenjit.biswas@kotak.com
+91 33 6615 6240

Karan Kulkarni
karan.kulkarni@kotak.com
+91 20 6608 3292

NIFTY DERIVATIVE SNAPSHOT FOR CURRENT SERIES

	NIFTY Future	OI (Shares)	VOLUME	BASIS	PCR OI	TREND LEVEL
CURRENT	19,485	11,367,000	4,206,200	89.6	1.18	19030
PREVIOUS	19,491	10,999,600	3,543,150	47.85	1.20	
% CHANGE	-0.03%	3.34%	18.71%	-	-	

OUTLOOK

Nifty

- After a flat start, Nifty remained range bound between 19400-19460 for most part of the day. Selling pressure witnessed in the final hour dragged the Nifty below 19400 and it settled near days low with a loss of 0.25 percent.
- Highest call side open interest is at 19500 and highest put side open interest is at 19400
- Higher call writing compared to the put writing indicates a negative sentiment
- Vwap based trading range for tomorrow is between 19330-19535

NIFTY LEVELS

18450 18600 18880 19030 19250 19450

Sectors/Stocks

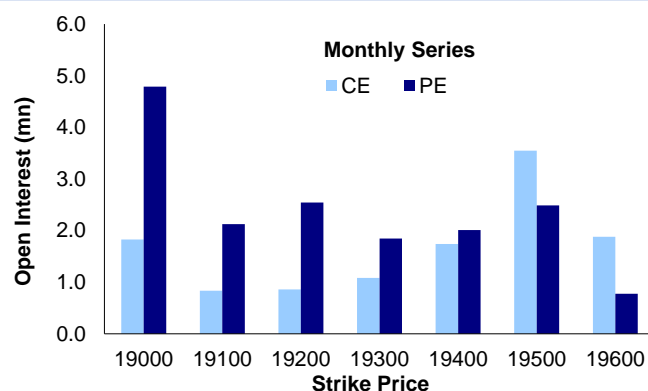
- Nifty Midcap 100 index outperformed today comparing to the Nifty and closed positive with a gain of 0.22 percent
- Top performing sectors were Auto and Realty while FMCG and Energy underperformed

Market wide open interest is 1,433,397 Cr.

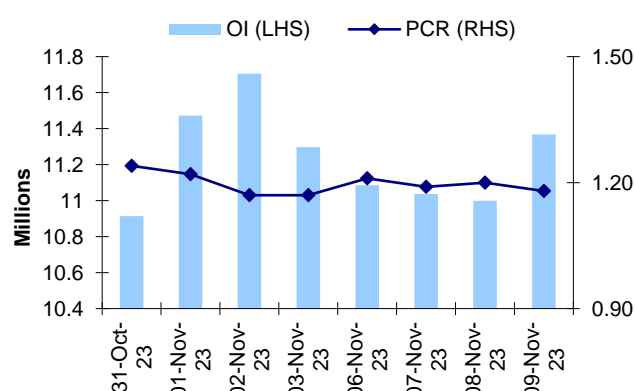
Recommendations

- DERIVATIVES SHORT TERM : BUY NSEFUT CUMMINSIND NOV @ 1760 SL 1670 TGT 1890
- DERIVATIVES MTF : BUY TATASTEEL @ 117.60 SL 110 TGT 145,155

NIFTY OPTIONS OI



NIFTY PCR OI



OPTION STATISTICS

Nifty OPTION CHAIN ANALYSIS

Nifty CMP: 19,395		STRIKE		Time: 09/11/2023; 3:30PM	
CALL OI	Change (CALL OI)	(16-NOV-2023 EXPIRY)	Change (PUT OI)	PUT OI	
56,236	42,172 (75%)	19900	1,040	1,193	
22,944	14,789	19850	101	313	
▼ 66,839	41,873 (63%)	19800	1,154	1,865	
26,402	18,681	19750	219	436	
59,224	30,746	19700	2,431	4,188	
27,992	11,298	19650	1,067	1,497	
62,174	25,929	19600	2,507	8,908	
41,322	28,500	19550	1,749	2,958	
▼ 1,24,504	67,763 (54%)	19500	18,458	37,142	
46,644	27,039	19450	11,158	22,666	
▼ 80,439	50,417 (63%)	19400	42,614 (50%) ▲	84,434	
9,741	5,377	19350	14,146	25,119	
18,464	8,396	19300	15,355	46,977	
3,105	431	19250	8,159	19,913	
6,870	2,668	19200	26,765 (50%) ▲	53,351	
921	282	19150	12,407	25,109	
2,708	-195	19100	14,963	35,894	
456	71	19050	9,326	16,216	
4,893	1,821	19000	29,588 (59%)	50,321	
87	30	18950	5,783	10,921	
389	90	18900	22,853	31,727	
11,22,083	7,46,973	TOTAL OI	4,85,582	8,25,379	

Source : NSE India Option Chain

FUTURE STATISTICS

OI INCREASE

SYMBOL	OI (%)	OI (SHARES)	PRICE CHG (%)
RAMCOCEM	31.0%	4,350,300	1.2%
LUPIN	10.7%	10,041,900	-0.5%
CHAMBLFERT	9.8%	18,468,000	2.3%
LALPATHLAB	9.3%	1,025,400	2.2%
INFY	9.0%	24,115,600	-1.2%
ASHOKLEY	8.9%	77,355,000	-1.8%
IPCALAB	8.3%	2,419,950	-0.7%
TECHM	8.2%	15,100,800	-1.3%
NATIONALUM	8.1%	69,682,500	-3.8%
APOLLOHOSP	7.5%	2,527,375	3.7%
PFC	7.0%	65,018,625	5.2%

OI DECREASE

SYMBOL	OI (%)	OI (SHARES)	PRICE CHG (%)
PAGEIND	-12.2%	130,965	-0.5%
MCDOWELL-N	-7.6%	9,466,100	-0.2%
M&M	-7.0%	14,276,150	4.3%
BSOFT	-6.0%	7,424,000	0.2%
DLF	-5.6%	36,336,300	0.8%
COROMANDEL	-5.3%	1,597,400	0.0%
PIDILITIND	-5.2%	2,628,750	-0.6%
BATAINDIA	-5.2%	2,278,875	1.0%
GNFC	-5.0%	9,696,700	-2.4%
ATUL	-4.9%	423,150	0.6%
MOTHERSON	-4.5%	81,870,100	-3.1%

OPTION STATISTICS

SIGNIFICANT CALL OPEN INTEREST

SYMBOL	STRK PRICE	OPTION TYPE	CLOSE (RS)	FUT CLOSE	OI (SHARES)
NIL					

SIGNIFICANT PUT OPEN INTEREST

SYMBOL	STRK PRICE	OPTION TYPE	CLOSE (RS)	FUT CLOSE	OI (SHARES)
NIL					

SIGNIFICANT CALL OPEN INTEREST ADDITION

SYMBOL	STRK PRICE	OPTION TYPE	OPEN INT	OI CHG (%)	CLOSE (Rs)
RAMCOCEM	1,150	CE	120,700	3450%	3.3
ASHOKLEY	191	CE	250,000	2400%	0.4
MARICO	500	CE	106,800	1680%	25.0
RAMCOCEM	1,030	CE	113,900	1575%	30.3
CHAMBLFERT	335	CE	321,100	1027%	1.4
RECLTD	345	CE	722,000	903%	1.5
RAMCOCEM	1,040	CE	141,950	882%	25.7
CHAMBLFERT	307	CE	353,400	786%	7.4
NATIONALUM	89	CE	345,000	667%	2.9
RAMCOCEM	1,050	CE	362,950	636%	21.6

SIGNIFICANT PUT OPEN INTEREST ADDITION

SYMBOL	STRK PRICE	OPTION TYPE	OPEN INT	OI CHG (%)	CLOSE (Rs)
PFC	275	PE	1,209,000	10300%	8.4
APOLLOHOSP	5,300	PE	100,625	4931%	114.0
GRANULES	380	PE	146,000	1725%	15.0
PFC	270	PE	3,739,375	1536%	5.9
PFC	272	PE	523,125	1400%	7.1
PFC	280	PE	1,240,000	1180%	11.5
CUB	144	PE	115,000	1050%	4.2
LUPIN	1,240	PE	102,850	831%	47.1
APOLLOTYRE	425	PE	153,000	800%	12.3
LUPIN	1,230	PE	152,150	752%	40.4

CALL OPTION VOLUMES

SYMBOL	STRK PRICE	OPTION TYPE	CONTRACTS	CLOSE (Rs)
MARUTI	10,500	CE	31,554	130.7
MARUTI	10,400	CE	21,326	178.4
APOLLOHOSP	5,200	CE	20,657	192.5
APOLLOHOSP	5,300	CE	20,522	135.0
RECLTD	320	CE	18,608	6.5
COALINDIA	320	CE	17,226	10.6
RELIANCE	2,340	CE	15,685	24.5
PFC	280	CE	15,472	5.8
BAJFINANCE	7,500	CE	13,999	124.1
PFC	270	CE	13,631	10.0

PUT OPTION VOLUMES

SYMBOL	STRK PRICE	OPTION TYPE	CONTRACTS	CLOSE (Rs)
RELIANCE	2,300	PE	13,598	21.9
MARUTI	10,300	PE	13,238	94.4
MARUTI	10,400	PE	11,955	133.5
RELIANCE	2,320	PE	9,328	29.8
APOLLOHOSP	5,200	PE	9,008	71.1
ADANI PORTS	800	PE	7,796	13.8
M&M	1,500	PE	7,177	15.5
MARUTI	10,000	PE	7,059	30.5
RELIANCE	2,280	PE	6,740	15.1
BAJFINANCE	7,400	PE	6,598	149.5

RATING SCALE (PRIVATE CLIENT GROUP)

- BUY** – Stock/Index looks strong from the expiry/near term perspective and is expected to gain on the basis of technical and/or derivative parameters. Time frame is minimum of current expiry and in certain cases extend to the next series depending on the stock behaviour. Strict stop loss needs to be adhered to for every buy/long recommendation given.
- SELL** – Stock/Index looks weak from the expiry/near term perspective and is expected to gain on the basis of technical and/or derivative parameters. Time frame is minimum of current expiry and in certain cases extend to the next series depending on the stock behaviour. Strict stop loss needs to be adhered to for every sell/short recommendation given.

FUNDAMENTAL RESEARCH TEAM (PRIVATE CLIENT GROUP)

Shrikant Chouhan Head of Research shrikant.chouhan@kotak.com +91 22 6218 5408	Arun Agarwal Auto & Auto Ancillary, Building Material, Cement, Consumer Durable arun.agarwal@kotak.com +91 22 6218 6443	Amit Agarwal, CFA Transportation, Paints, FMCG agarwal.amit@kotak.com +91 22 6218 6439
Purvi Shah Pharmaceuticals purvi.shah@kotak.com +91 22 6218 6432	Rini Mehta Research Associate rini.mehta@kotak.com +91 22 6218 6433	K. Kathirvelu Support Executive k.kathirvelu@kotak.com +91 22 6218 6427
Sumit Pokharna Oil and Gas, Information Tech sumit.pokharna@kotak.com +91 22 6218 6438	Pankaj Kumar Construction, Capital Goods & Midcaps pankajr.kumar@kotak.com +91 22 6218 5498	Amarjeet Maurya Internet Software & Services amarjeet.maurya@kotak.com +91 22 6218 6427

TECHNICAL RESEARCH TEAM (PRIVATE CLIENT GROUP)

Shrikant Chouhan shrikant.chouhan@kotak.com +91 22 6218 5408	Amol Athawale amol.athawale@kotak.com +91 20 6620 3350	Sayed Haider Research Associate sayed.haider@kotak.com +91 22 62185498
---	---	--

DERIVATIVES RESEARCH TEAM (PRIVATE CLIENT GROUP)

Sahaj Agrawal sahaj.agrawal@kotak.com +91 79 6604 1701	Prashanth Lalu prashanth.lalu@kotak.com +91 22 6218 5497	Prasenjit Biswas, CMT, CFTE prasenjit.biswas@kotak.com +91 33 6615 6240	Karan Kulkarni karan.kulkarni@kotak.com +91 20 6608 3292
---	---	--	---

Disclosure/Disclaimer

Kotak Securities Limited established in 1994, is a subsidiary of Kotak Mahindra Bank Limited. Kotak Securities is one of India's largest brokerage and distribution house.

Kotak Securities Limited is a corporate trading and clearing member of BSE Limited (BSE), National Stock Exchange of India Limited (NSE), Metropolitan Stock Exchange of India Limited (MSE), National Commodity and Derivatives Exchange (NCDEX) and Multi Commodity Exchange (MCX). Our businesses include stock broking, services rendered in connection with distribution of primary market issues and financial products like mutual funds and fixed deposits, depository services and Portfolio Management.

Kotak Securities Limited is also a depository participant with National Securities Depository Limited (NSDL) and Central Depository Services (India) Limited (CDSL). Kotak Securities Limited is also registered with Insurance Regulatory and Development Authority as Corporate Agent for Kotak Mahindra Life Insurance Company Limited and Kotak Mahindra General Insurance Company Limited and is also a Mutual Fund Advisor registered with Association of Mutual Funds in India (AMFI). We are registered as a Research Analyst under SEBI (Research Analyst) Regulations, 2014.

We hereby declare that our activities were neither suspended nor we have defaulted with any stock exchange authority with whom we are registered in last five years. However SEBI, Exchanges, Clearing Corporations and Depositories etc have conducted the routine inspection and based on their observations have issued advise/warning/show cause notices/deficiency letters/ or levied penalty or imposed charges for certain deviations observed in inspections or in normal course of business, as a Stock Broker / Depository Participant/Portfolio Manager. We have not been debarred from doing business by any Stock Exchange / SEBI or any other authorities; nor has our certificate of registration been cancelled by SEBI at any point of time.

We offer our research services to clients as well as our prospects.

This document is not for public distribution and has been furnished to you solely for your information and must not be reproduced or redistributed to any other person. Persons into whose possession this document may come are required to observe these restrictions.

This material is for the personal information of the authorized recipient, and we are not soliciting any action based upon it. This report is not to be construed as an offer to sell or the solicitation of an offer to buy any security in any jurisdiction where such an offer or solicitation would be illegal. It is for the general information of clients of Kotak Securities Ltd. It does not constitute a personal recommendation or take into account the particular investment objectives, financial situations, or needs of individual clients.

We have reviewed the report, and in so far as it includes current or historical information, it is believed to be reliable though its accuracy or completeness cannot be guaranteed. Neither Kotak Securities Limited, nor any person connected with it, accepts any liability arising from the use of this document. The recipients of this material should rely on their own investigations and take their own professional advice. Price and value of the investments referred to in this material may go up or down. Past performance is not a guide for future performance. Certain transactions - including those involving futures, options and other derivatives as well as non-investment grade securities - involve substantial risk and are not suitable for all investors. Reports based on technical analysis centers on studying charts of a stock's price movement and trading volume, as opposed to focusing on a company's fundamentals and as such, may not match with a report on a company's fundamentals.

Opinions expressed are our current opinions as of the date appearing on this material only. While we endeavor to update on a reasonable basis the information discussed in this material, there may be regulatory, compliance or other reasons that prevent us from doing so. Prospective investors and others are cautioned that any forward-looking statements are not predictions and may be subject to change without notice. Our proprietary trading and investment businesses may make investment decisions that are inconsistent with the recommendations expressed herein.

Kotak Securities Limited has two independent equity research groups: Institutional Equities and Private Client Group. This report has been prepared by the Private Client Group.

We and our affiliates/associates, officers, directors, and employees, Research Analyst(including relatives) worldwide may: (a) from time to time, have long or short positions in, and buy or sell the securities thereof, of company (ies) mentioned herein or (b) be engaged in any other transaction involving such securities and earn brokerage or other compensation or act as a market maker in the financial instruments of the subject company/company (ies) discussed herein or act as advisor or lender / borrower to such company (ies) or have other potential/material conflict of interest with respect to any recommendation and related information and opinions at the time of publication of Research Report or at the time of public appearance. Kotak Securities Limited (KSL) may have proprietary long/short position in the above mentioned scrip(s) and therefore may be considered as interested. The views provided herein are general in nature and does not consider risk appetite or investment objective of particular investor; readers are requested to take independent professional advice before investing. This should not be construed as invitation or solicitation to do business with KSL. Kotak Securities Limited is also a Portfolio Manager. Portfolio Management Team (PMS) takes its investment decisions independent of the PCG research and accordingly PMS may have positions contrary to the PCG research recommendation. Kotak Securities Limited does not provide any promise or assurance of favourable view for a particular industry or sector or business group in any manner. The investor is requested to take into consideration all the risk factors including their financial condition, suitability to risk return profile and take professional advice before investing.

The analyst for this report certifies that all of the views expressed in this report accurately reflect his or her personal views about the subject company or companies and its or their securities, and no part of his or her compensation was, is or will be, directly or indirectly related to specific recommendations or views expressed in this report.

No part of this material may be duplicated in any form and/or redistributed without Kotak Securities' prior written consent.

Details of Associates are available on www.kotak.com

1. "Note that the research analysts contributing to the research report may not be registered/qualified as research analysts with FINRA; and
2. Such research analysts may not be associated persons of Kotak Mahindra Inc and therefore, may not be subject to NASD Rule 2711 restrictions on communications with a subject company, public appearances and trading securities held by a research analyst account

Any U.S. recipients of the research who wish to effect transactions in any security covered by the report should do so with or through Kotak Mahindra Inc. (Member FINRA/SIPC) and (ii) any transactions in the securities covered by the research by U.S. recipients must be effected only through Kotak Mahindra Inc. (Member FINRA/SIPC) at 369 Lexington Avenue 28th Floor NY NY 10017 USA (Tel:+1 212-600-8850).

Kotak Securities Limited and its non US affiliates may, to the extent permissible under applicable laws, have acted on or used this research to the extent that it relates to non US issuers, prior to or immediately following its publication. This material should not be construed as an offer to sell or the solicitation of an offer to buy any security in any jurisdiction where such an offer or solicitation would be illegal. This research report and its respective contents do not constitute an offer or invitation to purchase or subscribe for any securities or solicitation of any investments or investment services. Accordingly, any brokerage and investment services including the products and services described are not available to or intended for Canadian persons or US persons."

Research Analyst has served as an officer, director or employee of subject company(ies): No

We or our associates may have received compensation from the subject company(ies) in the past 12 months.

We or our associates have managed or co-managed public offering of securities for the subject company(ies) in the past 12 months: No

We or our associates may have received compensation for investment banking or merchant banking or brokerage services from the subject company(ies) in the past 12 months. We or our associates may have received any compensation for products or services other than investment banking or merchant banking or brokerage services from the subject company(ies) in the past 12 months. We or our associates may have received compensation or other benefits from the subject company(ies) or third party in connection with the research report. Our associates may have financial interest in the subject company(ies).

Research Analyst or his/her relative's financial interest in the subject company(ies): No

Kotak Securities Limited has financial interest in the subject company(ies) at the end of the week immediately preceding the date of publication of Research Report: No

"However, Kotak Securities Prop/Arbitrage team could have exposure/financial interest to the subject company/companies during the ongoing month."

"Nature of financial interest is holding of equity shares and/or derivatives of the subject company."

Our associates may have actual/beneficial ownership of 1% or more securities of the subject company(ies) at the end of the month immediately preceding the date of publication of Research Report.

Research Analyst or his/her relatives has actual/beneficial ownership of 1% or more securities of the subject company(ies) at the end of the month immediately preceding the date of publication of Research Report: No.

Kotak Securities Limited has actual/beneficial ownership of 1% or more securities of the subject company(ies) at the end of the month immediately preceding the date of publication of Research Report: No

By referring to any particular sector, Kotak Securities Limited does not provide any promise or assurance of favourable view for a particular industry or sector or business group in any manner. The investor is requested to take into consideration all the risk factors including their financial condition, suitability to risk return profile and take professional advice before investing. Such representations are not indicative of future results.

Subject company(ies) may have been client during twelve months preceding the date of distribution of the research report.

"A graph of daily closing prices of securities is available at <https://www.nseindia.com/ChartApp/install/charts/mainpage.jsp> and <http://economictimes.indiatimes.com/markets/stocks/stock-quotes>. (Choose a company from the list on the browser and select the "three years" icon in the price chart)."

Our research should not be considered as an advertisement or advice, professional or otherwise. The investor is requested to take into consideration all the risk factors including their financial condition, suitability to risk return profile and the like and take professional advice before investing.

Investments in securities market are subject to market risks. Read all the related documents carefully before investing.

Registration granted by SEBI and certification from NISM in no way guarantee performance of the intermediary or provide any assurance of returns to investors.

Derivatives are a sophisticated investment device. The investor is requested to take into consideration all the risk factors before actually trading in derivative contracts. Compliance Officer Details: Mr. Sandeep Gupta. Call: 022 - 4285 8484, or Email: ks.compliance@kotak.com.

Kotak Securities Limited. Registered Office: 27 BKC, C 27, G Block, Bandra Kurla Complex, Bandra (E), Mumbai 400051. CIN: U99999MH1994PLC134051, Telephone No.: +22 43360000, Fax No.: +22 67132430. Website: www.kotak.com / www.kotaksecurities.com. Correspondence Address: Infinity IT Park, Bldg. No 21, Opp. Film City Road, A K Vaidya Marg, Malad (East), Mumbai 400097. Telephone No: 42856825. SEBI Registration No: INZ000200137 (Member of NSE, BSE, MSE, MCX & NCDEX), AMFI ARN 0164, PMS INP000000258 and Research Analyst INH000000586. NSDL/CDSL: IN-DP-629-2021. Compliance Officer Details: Mr. Sandeep Gupta. Call: 022 - 4285 8484, or Email: ks.compliance@kotak.com

In case you require any clarification or have any query/concern, kindly write to us at Service.securities@kotak.com. For grievances write to KS.escalation@kotak.com and follow below Grievances Escalation matrix.

Details of	Contact Person	Address	Contact No.	Email Id	Working Hours
Customer care/ Complaints	Mr. Ritesh Shah	Kotak Towers, 8th Floor, Building No.21, Infinity Park, Off Western Express Highway, Malad (East), Mumbai, Maharashtra - 400097	18002099393	ks.escalation@kotak.com	9 a.m. to 6 p.m. All trading days
Head of Customer care	Mr. Tabrez Anwar	Kotak Towers, 8th Floor, Building No.21, Infinity Park, Off Western Express Highway, Malad (East), Mumbai, Maharashtra - 400097	022-42858208	ks.servicehead@kotak.com	9 a.m. to 6 p.m. All trading days
Compliance Officer	Mr. Sandeep Gupta	Kotak Towers, 8th Floor, Building No.21, Infinity Park, Off Western Express Highway, Malad (East), Mumbai, Maharashtra - 400097	022-42858484	ks.compliance@kotak.com	9 a.m. to 6 p.m. All trading days
CEO	Mr. Jaideep Hansraj	Kotak Towers, 8th Floor, Building No.21, Infinity Park, Off Western Express Highway, Malad (East), Mumbai, Maharashtra - 400097	022-42858301	ceo.ks@kotak.com	9 a.m. to 6 p.m. All trading days

In absence of response/complaint not addressed to your satisfaction, you may lodge a complaint with SEBI at <https://scores.gov.in/scores/Welcom.html> or Exchange at <https://investorhelpline.nseindia.com/NICEPLUS/>, <https://bsecl.bseindia.com/ecomplaint/frmlInvestorHome.aspx>, Investor Service Centre | National Commodity & Derivatives Exchange Limited (ncdex.com), <https://igrs.mcxindia.com/>. Please quote your Service Ticket/Complaint Ref No. while raising your complaint at SEBI SCORES/Exchange portal or Depository at <https://www.epass.nsdl.com/complaints/websitecomplaints.aspx> and <https://www.cdslindia.com/Footer/grievances>.